

**BJARKE INGELS**

# **SURFACE**

ISSUE 147  
MAY/JUNE 2018

THE DESIGN ISSUE



The List



**Articolo**

*Surface* says: “Nicci Green mixes angular hardware with expertly sculpted glass, striking a perfect balance between industrial assertiveness and handmade charm. It’s a rare quality that makes Articolo’s lighting as versatile as it is distinctive.”



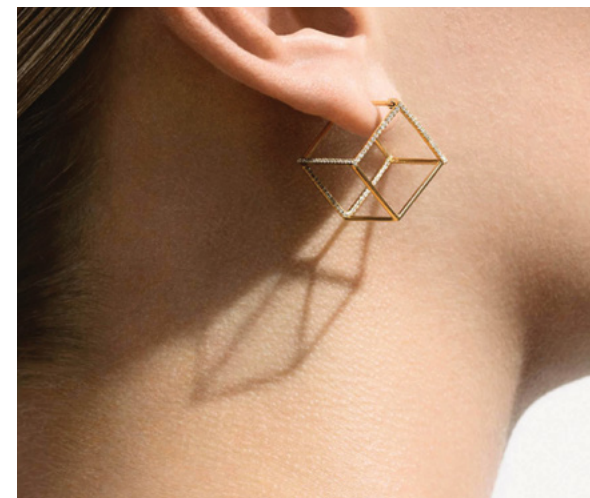
**Spin Ceramics**

*Surface* says: “Spin Ceramics has taken on the delicate task of contextualizing an age-old craft within the modern world—and with great success. Through thoughtful design, the brand creates contemporary pieces that double as vessels for handing the tradition of Chinese pottery to the next generation.”



**Billiani**

*Surface* says: “Billiani is both a steward of timeless Italian furniture-making traditions and an arbiter of contemporary taste. Chairs feature classic silhouettes with a few playful flourishes: surprise curves, subtle surface details, and bright pops of color.”



**SHIHARA**

*Surface* says: “SHIHARA uses the familiar simplicity of the line and circle to create jewelry of surprising forms. Each piece’s elegance belies its mathematical foundations, whether it’s the angled hemispheres of the Pearl collection or the Platonic geometry of its three-dimensional necklaces, bracelets, and rings.”

“A members-only directory of brands that *Surface* editors have carefully selected, The List is both a stamp-of-approval network and our way of filtering out the noise.”

—Spencer Bailey, editorial director of *Surface Media* and editor-in-chief of *Surface magazine*

Find out more  
[surfacemag.com/the-list](http://surfacemag.com/the-list)