

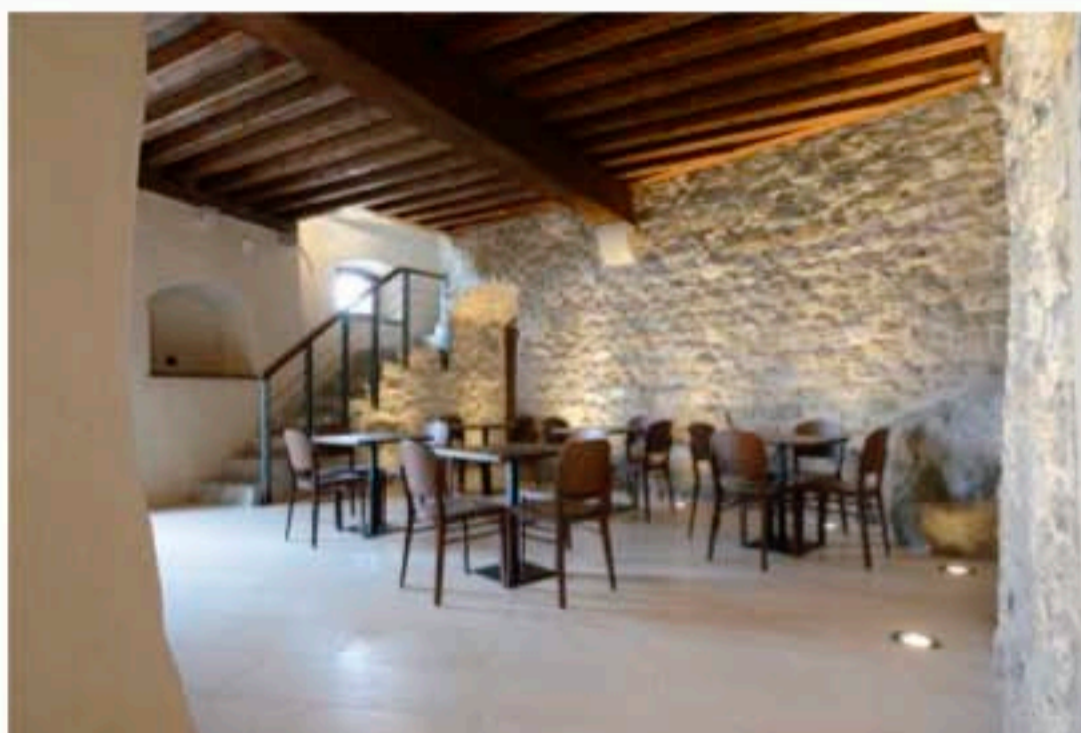
Billiani chairs adorn the interiors the Artegna Castle

November 24, 2014

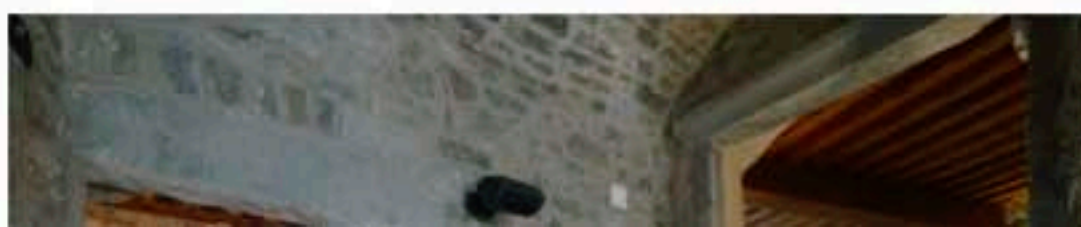
[Like](#) [Share](#) 0



The firm Avon Architeti Associati from Udine, upon commission by the Municipality of Artegna (UD), has chosen Billiani's Aloe and Take chairs to adorn the new refreshment area at the Artegna Castle. The castle has been renovated as part of a project by the architects to bring it back to life after an earthquake partly destroyed it in 1976.



Recent work (2011-2014), planned and supervised by Studio Architetti Avon together with Conti e Associati Ingegneria, allowed reclamation work to be completed with the restoration of the southern tower, the central core and the eastern wing towards the parish church, which is embellished with a pleasant courtyard.



Search Articles

- Architecture
- Design
- Interiors
- Interviews

Name

Email

Subscribe



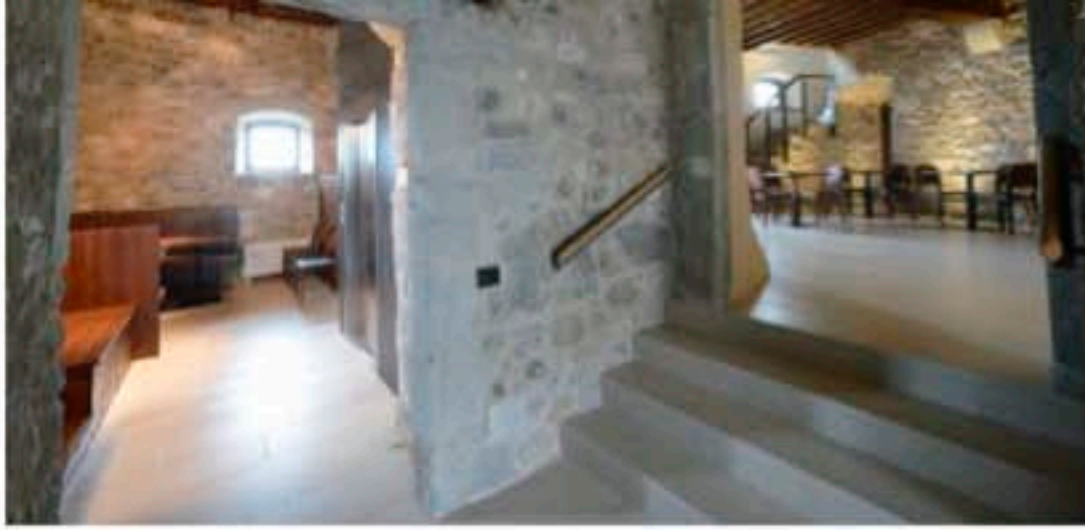
Recent Activity

[Log In](#) Log in to Facebook to see what your friends are doing.

Fernando Menis Architects - Interview - Descroll
2 people recommend this.

Punt's corporate identity by Odosdesign - Descroll
16 people recommend this.

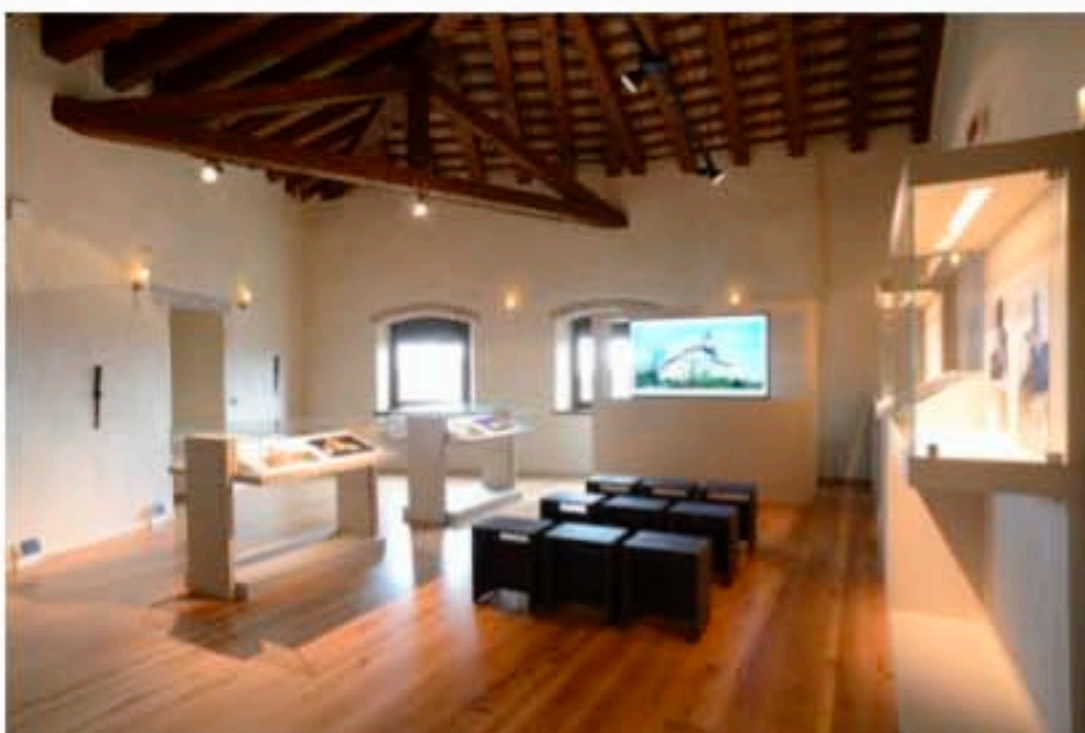
Facebook social plugins



The architectural project has attempted to exploit the pre-existing and recoverable parts of the castle as much as possible. Delicate cleaning operations were carried out, together with the restoration of the stone walls spared by the earthquake. In the basement, in particular, where the refreshment area has been set up, restoration of the medieval structure can be clearly seen.



The mighty stone walls wind around the tallest and most ancient tower, which is popularly entitled "Lombardic" to emphasize its defensive nature.

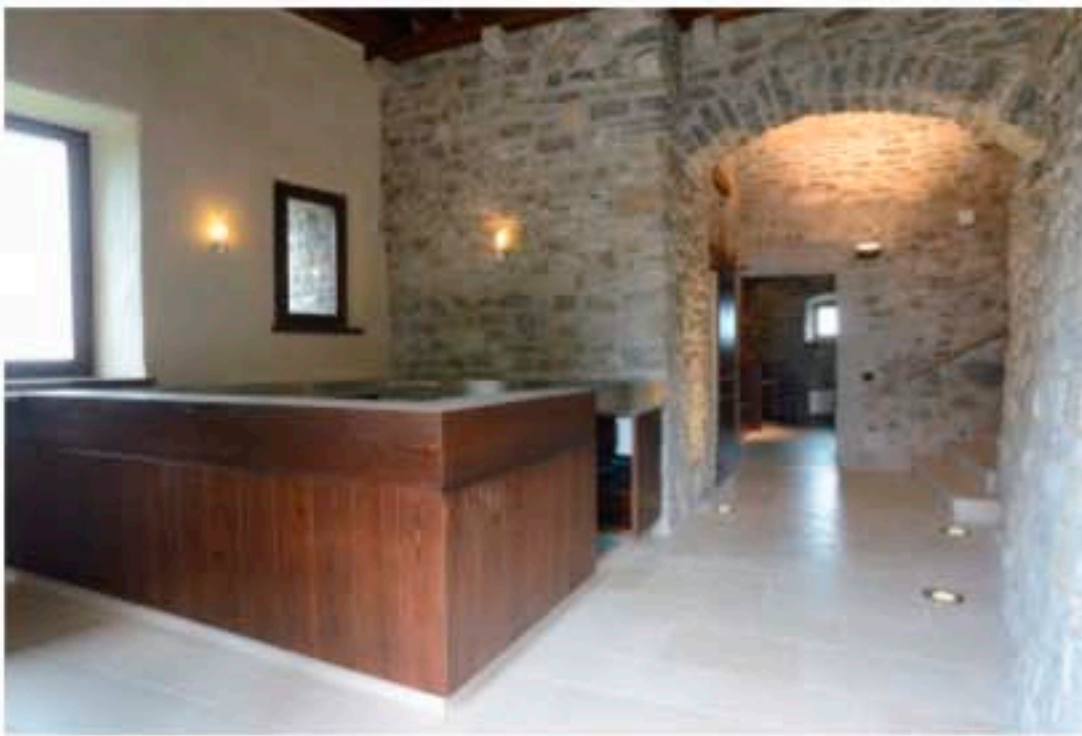


Careful lighting draws attention to the walls. The designer, architect Giulio Avon, was particularly committed to ensuring that the additions integrated naturally into the existing structure; this involved choosing traditional materials such as wood and stone.





The new use as a predominantly exhibitive space – as agreed by local administration – led the designer to reinterpret the interiors, while even here maintaining distinctive aspects of the existing structures. A striking example is the refreshment area located on the ground floor.



It houses custom-made furniture that highlights the traditional nature of the basement, wiping away its more vernacular traits. The Billiani chairs have found a suitable home in this context, gracefully modernizing the elegant environment.



The colour of the wood in the Take and Aloe chairs supplied by the Friulian company, and of their decorative features, matches the chestnut beams of the ceilings, producing an even and blended effect between the elements from different periods.



The Take chair, designed by Emilio Nanni, is made from beech wood and is a contemporary reinterpretation of the archetype chair. Aloe, on the other hand, designed by Werther Toffoloni, is made from solid beech and combines the immediate authenticity of its forms with smooth contours and unexpected remnants of beauty.



BILLIANI – www.billiani.it

Like Share 0

Artegna Castle Billiani chairs