

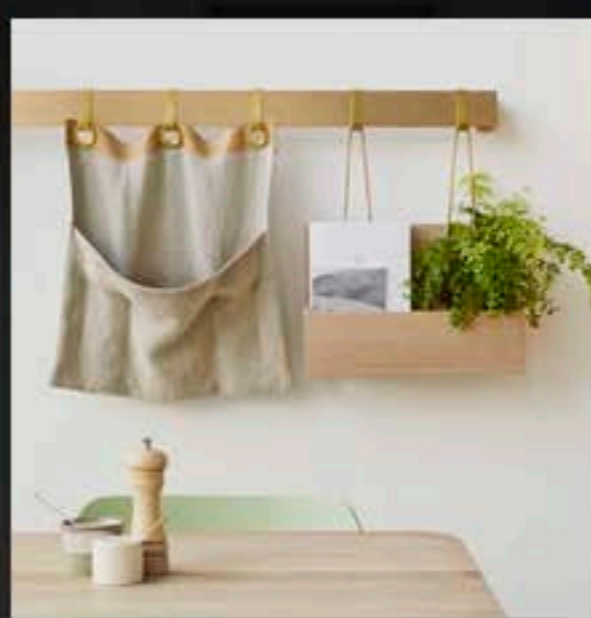
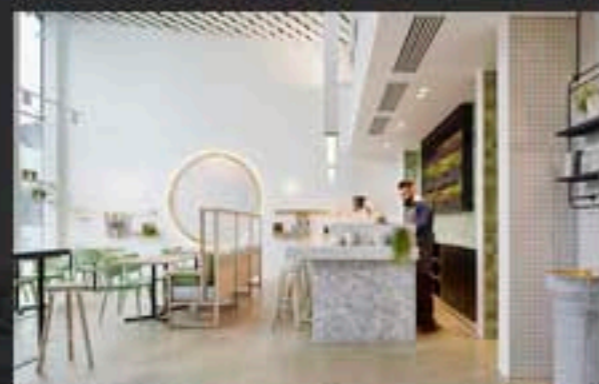
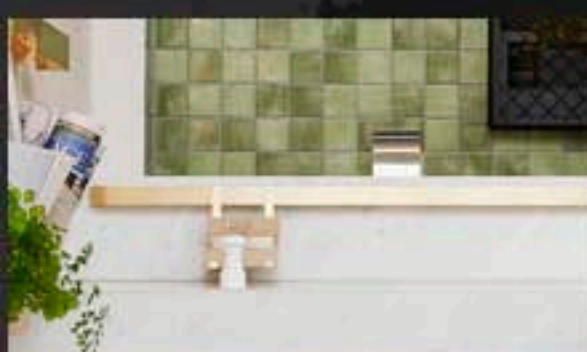
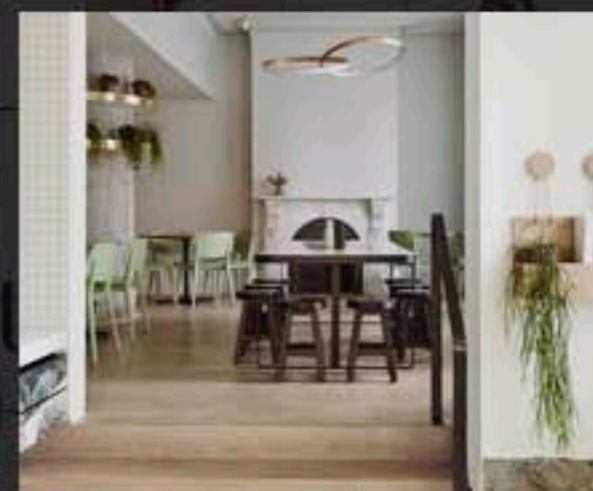
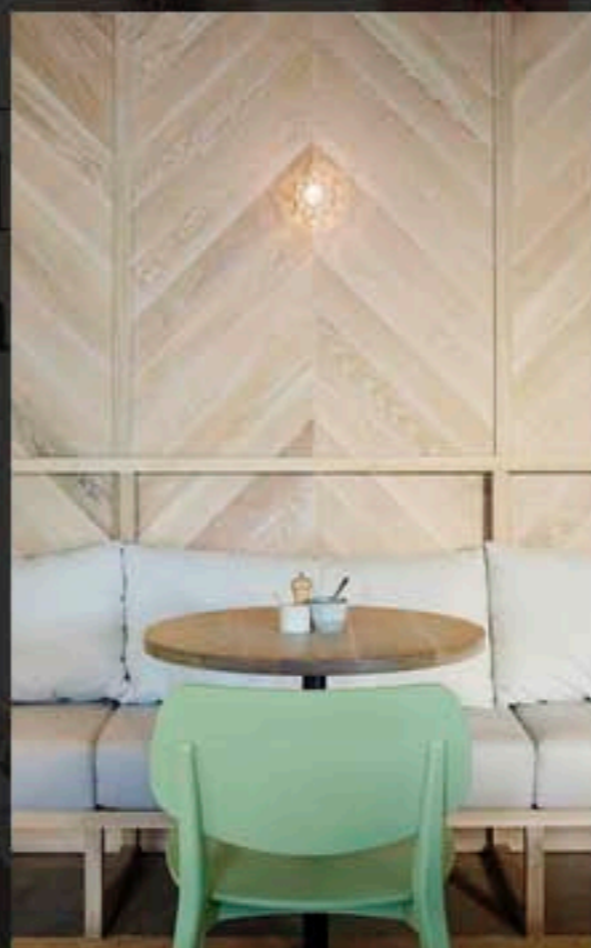
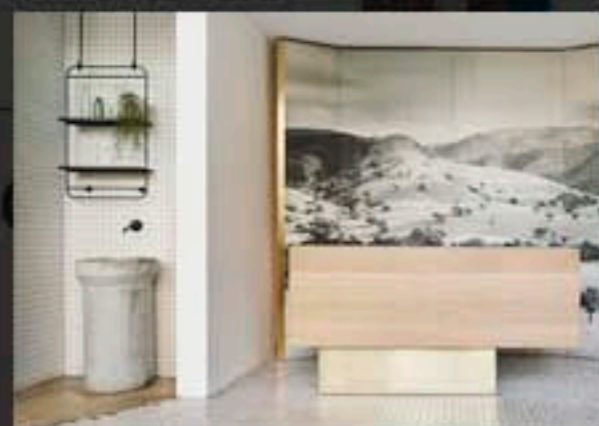
VOGUE ONLINE SHOPPING NIGHT

13 days 11 hours 22 mins 39 secs  
FASHION BEAUTY BRIDAL

VOGUE LIVING

WIN FORUM LOGIN REGISTER  
BLOGS MISS VOGUE

ANTHROPOLOGIE





# The Kettle Black in Melbourne blurs the lines between cafe and restaurant



1/14

SHARE

Studio You Me has created an elegant and light-filled cafe/restaurant in an Elenberg Fraser apartment tower in South Melbourne.





The colour palette has been carefully curated with soft oak timbers and polished concrete offset by the punch of the apple green furniture.





Dark edged communal tables keep things casual while the elegant interiors and fittings give the space a sense of occasion. The striking light feature is designed by Studio You Me and made by Mance design.





Doll chairs by Billiani in a custom green are a feature throughout.





The open and light-filled space.



Photo: Peter Clarke



Photo: Peter Clarke



Photo: Peter Clarke



