

HOME > STORY



SHARE Print article Recommend Post a comment

DAILY NEWS Nov 20, 2013 1:31 PM - 0 comments

## Into the blue

**The Capo Nord Hotel on the private Albarella Island - south of Venice - chooses Billiani seats**

2013-11-20 TEXT SIZE

The new Capo Nord Hotel recently opened on Albarella, a private island owned by the Marcegaglia group and located in the Venetian Lagoon in the Po Delta Park (PO), rich in lush green maquis scrubland.

The Capo Nord Hotel on Albarella Island chooses Billiani seats.

In collaboration with THDP Turin, Billiani has enriched several common areas, including the restaurant and bar, by supplying a significant number of Croissant chairs, designed by Emilio Nanni. And many of the hotel's apartments and rooms have been furnished with Nordica 601 seats, a contemporary interpretation of the classic tub chair, designed by Marco Ferreri.

For more information, visit [billiani.it](#)

### Photos



**Larger photo & full caption**  
File size: 67.3 KB (873px X 450px)  
Caption: Lobby of Hotel Capo Nord Albarella



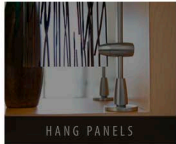
**Larger photo & full caption**  
File size: 57.8 KB (875px X 450px)  
Caption: Many of the hotel's apartments and rooms have been furnished...



**Larger photo & full caption**  
File size: 59 KB (875px X 450px)  
Caption: Luxurious bathroom at Hotel Capo Nord Albarella



**Larger photo & full caption**  
File size: 81.3 KB (873px X 450px)  
Caption: From the blue sea to blue seats in the hotel



### Magazine



Canadian Interiors Magazine  
 \* Digital Edition  
 \* Print Archives  
 \* Subscribe

### Design Source Guide

#### Spring 2013



+View

#### Fall 2012

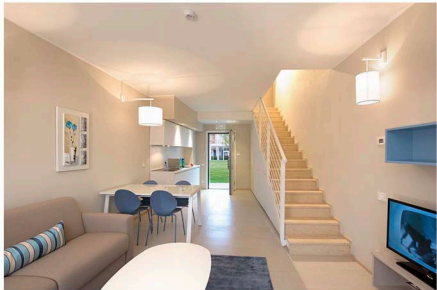


+View

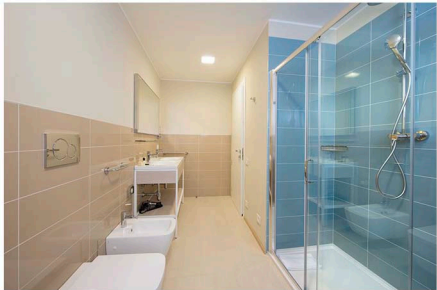




Lobby of Hotel Capo Nord Albarella



Many of the hotel's apartments and rooms have been furnished with Nordica 601 seats, a contemporary interpretation of the classic tub chair, designed by Marco Ferreri



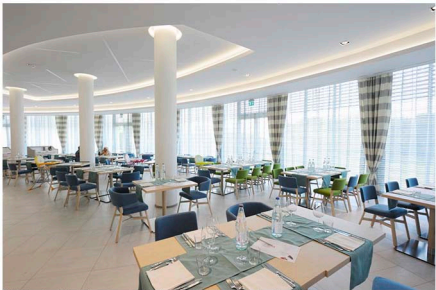
**Luxurious bathroom at Hotel Capo Nord Albarella**



From the blue sea to blue seats in the hotel



**In collaboration with THDP Turin, Billiani has enriched several common areas, including the restaurant and bar, by supplying a significant number of Croissant chairs, designed by Emilio Nanni**



Hotel Capo Nord Albarella's restaurant and bar feature Croissant chairs designed by Emilio Nanni



Hotel Capo Nord Albarella's restaurant and bar feature Croissant chairs designed by Emilio Nann