

DeScroll



Multidisciplinary studio +tongtong recently completed a boutique retail space...



The new Capo Nord Hotel recently opened on Albarella,...



On the weekend of October 12th in Joshua Tree,...



From the designer: "It is located just south from..."



A highly innovative single-storey modern extension to a 3-bedroom...



"Nuctale," the contraction of Nuage Fractal, is a tiny...



Frame collection comes from generating serene and timeless



The project involved a complete interior renovation and design...



The Fogo Island Inn is a public building for...



One presents a product as an end result. But...

Search Articles

Go

Architecture

Design

Interiors



Recent Activity

Sterkwater drankorgels
5 people recommend this.

Penthouse
22 people recommend this.

Lazona kawasaki plaza
One person recommends this.

Manor house stables
Be the first of your friends to recommend this.

FAZ collection
22 people recommend this.

Facebook social plugin

The Capo Nord Hotel

December 3, 2013

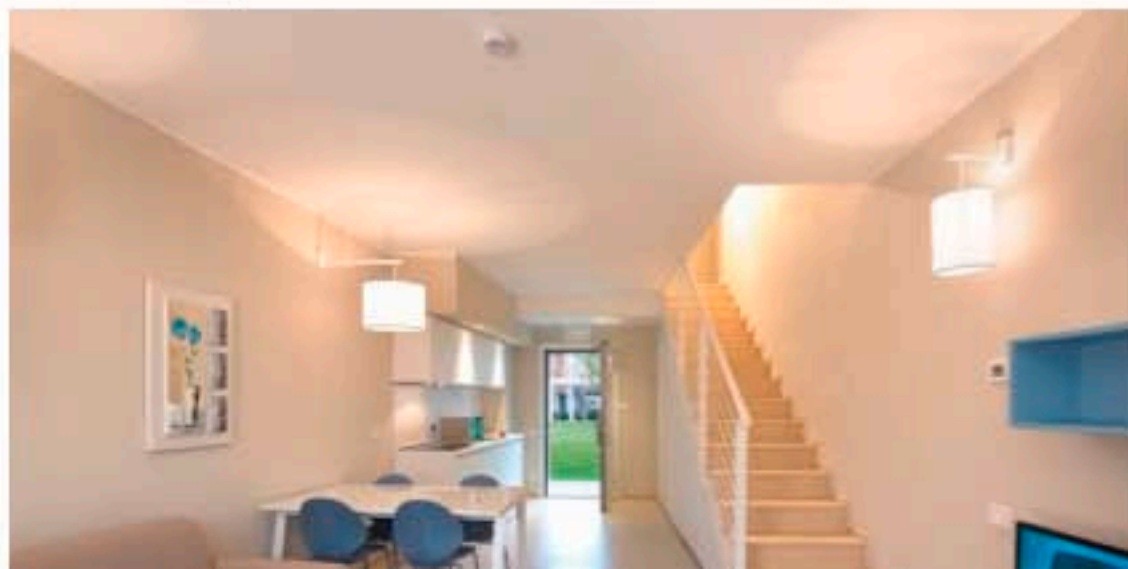
[Like](#) 1 [Send](#)



The new Capo Nord Hotel recently opened on Albarella, a private island owned by the Marcegaglia group and located in the Venetian Lagoon in the Po Delta Park (RO), rich in lush green maquis scrubland.



In collaboration with THDP Turin, Billiani has enriched several common areas, including the restaurant and bar, by supplying a significant number of Croissant chairs – designed by Emilio Nanni – the many versions of which help to create spaces that are consistent but never dull.



Search Articles

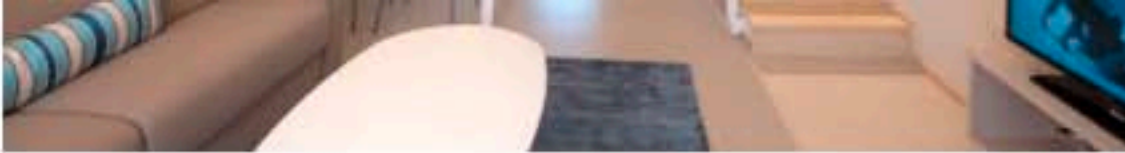
- Architecture
- Design
- Interiors



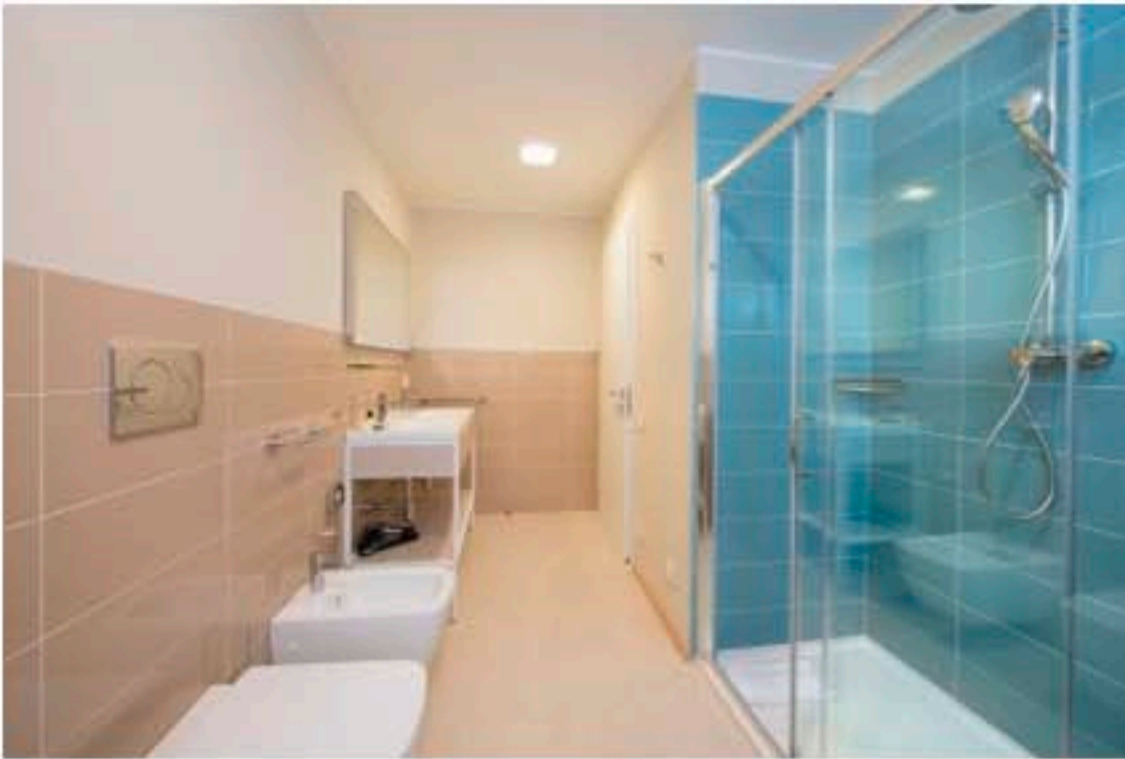
Recent Activity

- Sterkwater drankorgels**
5 people recommend this.
- Penthouse**
22 people recommend this.
- Lazona kawasaki plaza**
One person recommends this.
- Manor house stables**
Be the first of your friends to recommend this.
- FAZ collection**
22 people recommend this.

[Facebook social plugin](#)



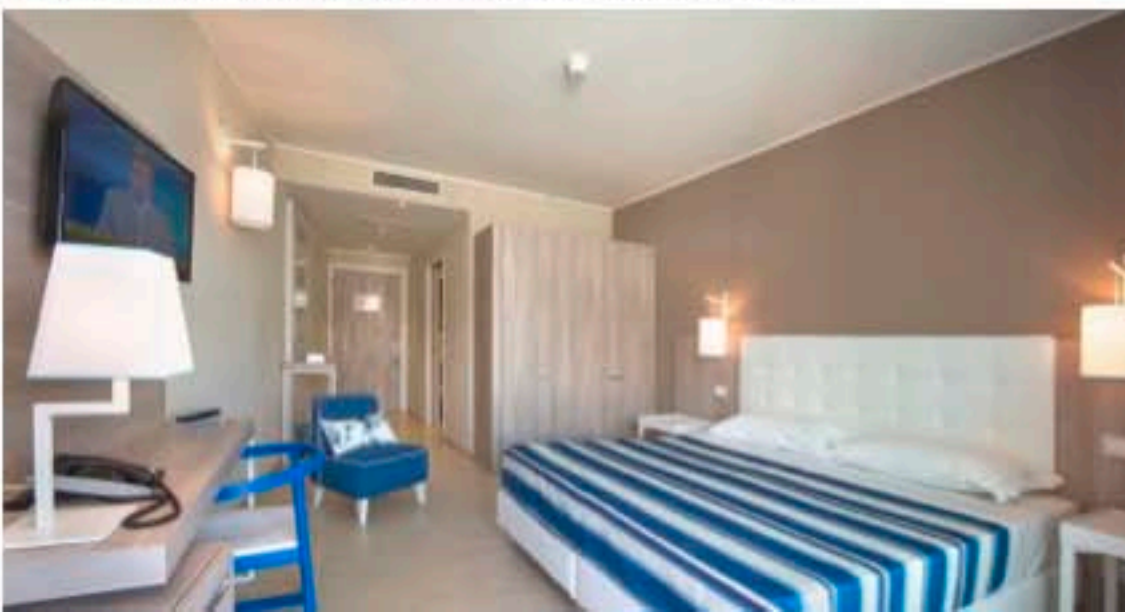
Characterized by remarkable formal solidity, the Croissant chairs stand out for their natural or bleached beech wood frames, coupled with a fabric seat and backrest available in a wide range of colours and finishes.



The chair, armchair and lounge chair versions have been used for the hotel restaurant, while the stool with backrest complements the counter in the bar area. The three colours – green, teal blue and beige – chosen for the spaces, ensure consistency between all areas while harmoniously alternating or blending together in each individual environment.



Close to the fine-sand beach, the hotel features rooms, one-bedroom apartments with fully equipped kitchenettes (some on two floors), and suites with sea views. Each living unit is controlled internally by a home automation system and independent air conditioning.



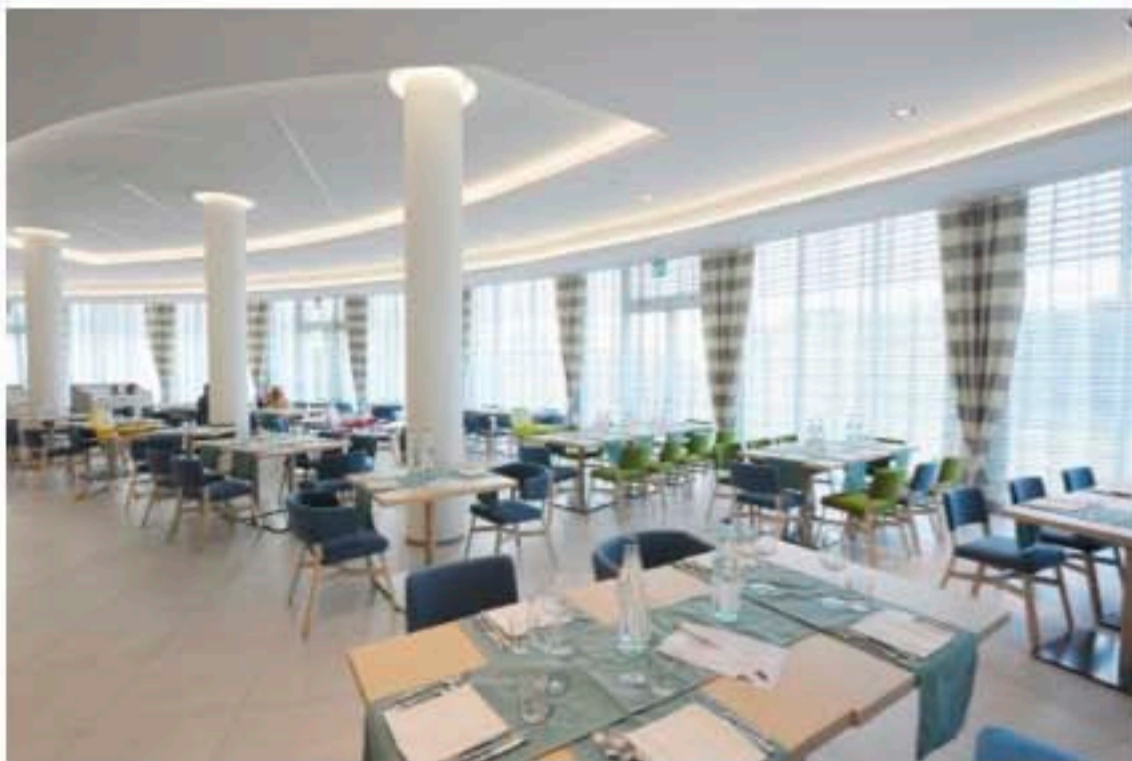


Many of the hotel's apartments and rooms have been furnished with Nordica 601 seats – a contemporary interpretation of the classic tub chair, whose perfect semi-circular shape is traced out by an unbroken form incorporating the back and armrest.



The chair emphasizes the frankness of its designer, Marco Ferreri, who has long been interested in creating meticulous and simple design pieces made to last.







Founded in 1911, Billiani is a long-standing and family-held Italian company whose success is based on simple but fundamental values and principles. Its craft know-how, love of detail, and quest for top-quality materials, processes, finishes and designs are handed down from generation to generation and shared with every staff member in the company.

Design: Billiani

Design team: Emilio Nanni

<http://www.billiani.it/new/en>

