

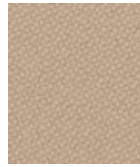
# Oxygen



Fresh BA040



Spruce BA039



Free BA014



Altitude BA038



Breath BA036



Sassy BA022



Life BA035



Yarrow BA034



Chang BA033



Garden BA013



Waft BA037



Kanuka BA032



Cypress BA027



Zeal BA029



Liberty BA030



Retem BA028



Massage BA012



Fern BA018



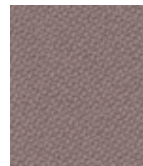
Fennel BA031



Serene BA021



Aloe BA020



Muse BA024



Lull BA023



Rainbow BA017



Soothe BA026



Replenish BA016



Feng Shui BA009



Detox BA025



Revive BA010



Reiki BA011



Relax BA008



Meditate BA007



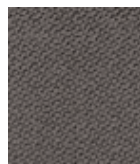
Cleanse BA002



Fronde BA019



Cirrus BA015



Tranquil BA005



Holistic BA003



Karma BA004



Therapy BA006



Inhale BA001

# Oxygen



Printed DEC 06



**UK**  
**Composition**  
 99% Wool, 1% Polyamide  
 Non metallic dyes/stuffs

**Weight**  
 310g/m<sup>2</sup> ±5%  
 (465g/lin.m. ±5%)

**Width**  
 150cm ±2% Usable

**Abrasion Resistance**  
 80,000 Martindale cycles with a 5 year guarantee of wearability (full details available)

**Flammability**  
 BS EN 1021 - 1:1994 (cigarette)  
 BS EN 1021 - 2:2006 (match)  
 BS 7176 : 1995 Low Hazard

**'Optional - Please specify when ordering**  
 BS 5852:1990 Section 4 Ignition Source 5 when ZIRPRO<sup>®</sup> ausgestellt/  
 BS 7176:1995 Medium Hazard when ZIRPRO<sup>®</sup> treated'

Note: Flammability performance is dependent on components used.

**Light Fastness**  
5 (ISO 105 - B02:1999)

**Fastness to Rubbing**  
Wet: 4 Dry: 4 (ISO 105 - X12:2002)

**Maintenance**  
Vacuum regularly. Professionally dry clean or wipe clean with a damp cloth.

**Availability**  
Generally ex-stock

**Colour Matching**  
Batch to batch variations in shade may occur within commercial tolerances.

Note: We reserve the right to alter technical specifications without notice.

Tested in accordance with BS 2543:1995/2004. Further information available on request.

Please note that ultimate seam performance is dependent on seam construction, and needle and thread type. We recommend that appropriate sewing advice be taken.

**D**  
**Zusammensetzung**  
 99% Wolle, 1% Polyamide  
 Nicht schwermetallhaltige Farbstoffe

**Gewicht**  
 310g/m<sup>2</sup> ±5%  
 (465g/ltf.M. ±5%)

**Breite**  
 150cm ±2% ohne Webkante

**Scheuerfestigkeit**  
 80,000 Martindale Scheuerleuren und 5 Jahre Garantie gegen Durchscheuern (Details auf Anfrage)

**Feuersicherung**  
 EN 1021 - 1:1994 (Zigarettestest)  
 EN 1021 - 2:2006 (allumette)  
 BS 7176 : 1995 Low Hazard

**'Bitte bei Auftragserteilung angeben**  
 BS 5852:1990 Section 4 Ignition Source 5 wenn mit ZIRPRO<sup>®</sup> ausgerüstet/  
 BS 7176:1995 Medium Hazard wenn mit ZIRPRO<sup>®</sup> ausgerüstet'

Bemerkung: Schwerentflammbarkeit hängt von verwendeten Komponenten ab.

**Lichtechtheit**  
5 (ISO 105 - B02:1999)

**Reibechtheit**  
Nass: 4 Trocken: 4 (ISO 105 - X12:2002)

**Reinigung**  
Regelmässig absaugen. Professionelle Trockenreinigung. Alternativ dazu mit einem feuchten Tuch abwischen.

**Lieferzeit**  
Im allgemeinen ab Lager

**Farbabweichungen**  
Handelsübliche Farbabweichungen vorbehalten.

Anmerkung: Wir behalten uns die Änderung von technischer Spezifikationen vor.

Wurde nach BS 2543:1995/2004 getestet. Weitere Informationen erhalten Sie auf Nachfrage.

Eine optimale Nahtausreifeleistung hängt von der Nahtweise, der verwendeten Nadel und des Fadens ab. Wir empfehlen daher Nähverusche durchzuführen.

**F**  
**Composition**  
 99% Laine, 1% Polyamide  
 Teintures non métalliques

**Poids**  
 310g/m<sup>2</sup> ±5%  
 (465g/m.l. ±5%)

**Largeur**  
 150cm ±2% utilisable

**Résistance à l'abrasion**  
 80,000 Martindale tours avec une garantie de durabilité de 5 ans (renseignements complémentaires disponibles)

**Flammabilité**  
 EN 1021 - 1:1994 (cigarette)  
 EN 1021 - 2:2006 (allumette)  
 BS 7176 : 1995 Low Hazard

**'Prière de le mentionner lors de la commande**  
 BS 5852:1990 Section 4 Ignition Source 5 si traitement Zirpro<sup>®</sup>/  
 BS 7176:1995 Medium Hazard si traitement Zirpro<sup>®</sup>

Notes: Réaction au feu dépend du composite utilisé.

**Solidité à la Lumière**  
5 (ISO 105 - B02:1999)

**Solidité au Frottement**  
Mouillé: 4 Sec: 4 (ISO 105 - X12:2002)

**Nettoyage**  
Aspirer régulièrement. Nettoyage à sec professionnel. Autrement, essayer avec une étoffe humide.

**Disponibilité**  
Normalement en stock

**Standardisation des coloris**  
Variations de coloris d'un bain à un autre peuvent se manifester.

Veillez noter que nous réservons le droit de modifier les spécifications techniques sans préavis.

Testé selon la norme BS 2543:1995/2004. De plus autres informations sont disponibles sur demande.

Veillez noter que le gisage de la couture sous tension dépend de la structure de la couture de l'aiguille et du fil. Nous recommandons de prendre conseil au près d'un professionnel.

**DK**  
**Materiale**  
 99% Uld, 1% Polyamide  
 Ikke metaliske farvestoffer

**Vægt**  
 310g/m<sup>2</sup> ±5%  
 (465g/lin.m. ±5%)

**Bredde**  
 150cm ±2% anvendeligt

**Siltestyrke**  
 80,000 Martindale slidesvejselser med 5 års garanti (udførtig beskrivelse af garantien kan rekvireres)

**Flammesikring**  
 EN 1021 - 1:1994 (cigarettest)  
 EN 1021 - 2:2006 (cejlumette)  
 BS 7176 : 1995 Low Hazard

**'Flammesikring når ZIRPRO<sup>®</sup>-behandlet**  
 (efterbehandling, bedes udspecificeret ved bestilling af stofet)/BS 5852:1990 Section 4 Ignition Source 5 når ZIRPRO<sup>®</sup> behandlet/  
 BS 7176:1995 Medium Hazard når ZIRPRO<sup>®</sup> behandlet'

Bemærk: Flammesikkerheden er afhængig af anvendt skumtype

**Lysægtthed**  
5 (ISO 105 - B02:1999)

**Grådigæthed**  
Våd: 4 Torr: 4 (ISO 105 - X12:2002)

**Rengøring**  
Støvsuges regelmæssigt. Kemisk rens. Alternativ rengøring med en hårdt opvredt klud.

**Leveringstid**  
Normalt ab lager

**Farvedifferencer**  
Farvedifferencer indenfor kommercielle tolerancegrænser kan forekomme fra serie til serie.

Bemærk: Vi forbeholder os retten til at ændre tekniske specifikationer uden varsel

Testet i henhold til BS2543:1995/2004. Yderligere information kan fås på forespørgsel.

Vær opmærksom på, at optimal sømglidning er afhængig af søm, nål og trådtype. Vi anbefaler, at du følger relevante syinstruktioner

**ES**  
**Composición**  
 99% Lana, 1% Polyamide  
 Tintes no metálicos

**Peso**  
 310g/m<sup>2</sup> ±5%  
 (465g/lin.m. ±5%)

**Ancho**  
 150cm ±2% utilizable

**Resistencia a la abrasión**  
 80,000 Martindale ciclos con garantía de uso 5 años (más información disponible bajo consulta)

**Infamabilidad**  
 EN 1021 - 1:1994 (cigarrillo)  
 EN 1021 - 2:2006 (ceñilla)  
 BS 7176 : 1995 Low Hazard

**'Con tratamiento adicional de foamizado por favor especificar cuando se requiere en el pedido**  
 BS 5852:1990 Section 4 Ignition Source 5 estando tratado con ZIRPRO<sup>®</sup> /  
 BS 7176:1995 Medium Hazard estando tratado con ZIRPRO<sup>®</sup> '

Condiciones ignífugas dependientes del tipo de foam utilizado.

**Solidez a la luz**  
5 (ISO 105 - B02:1999)

**Solidez al rozamiento**  
Húmedo: 4 Seco: 4 (ISO 105 - X12:2002)

**Mantenimiento**  
Limpiar con aspiradora con regularidad. Limpiar en seco, o bien lavar con un paño húmedo.

**Disponibilidad**  
Directamente de stock

**Igualdad de color**  
Cada lote puede tener pequeñas variaciones en el tono dentro de las tolerancias comercialmente aceptadas.

Se reserva el derecho de modificar las especificaciones técnicas sin previo aviso.

Pruebas realizadas según la norma BS 2543:1995/2004. Más información disponible bajo consulta.

El deslizamiento de costura depende de su construcción así como el tipo de aguja e hilo empleados. Se recomienda que pida consejos apropiados para la costura

# Oxygen



## 100% Climate neutral fabrics

Climate neutral fabrics are another key strand of our sustainability journey and another environmentally friendly product choice for consumers.

During the manufacturing process greenhouse gases are released, such as carbon dioxide, which contribute to climate change. The climate neutral concept means that these emissions are offset, or balanced.

## How offsetting works

The manufacture of every metre of fabric has been carefully analysed by our partner Climate Care to understand exactly how much carbon dioxide is produced. The price of every metre includes an amount which Climate Care then invest in carbon offsetting projects which reduce CO<sub>2</sub> in the atmosphere to the same degree.

## Offset projects

CO<sub>2</sub> emissions are offset by funding special projects around the world. These can be in:

- Renewable energy – replacing non-renewable fossil fuels
- Energy efficiency – reducing the amount of fuel needed
- Forest restoration – absorbing CO<sub>2</sub> from the atmosphere as trees grow

Specific projects that we are helping to fund include reforestation in Uganda and home insulation in the Himalayas.

Climate Care are a specialist organisation dedicated to reducing global warming. For more information, please see: [www.climatecare.org](http://www.climatecare.org)

# camira

Camira Fabrics Ltd, Hopton Mills, Mirfield, West Yorkshire, UK, WF14 8HE

T +44 (0)1924 490591 Sales: UK (01924) 490491, Int. +44 1924 491666 F +44 (0)1924 495605 / 498930 e-mail: info@camirafabrics.com

UK Sales T 01924 490491 F 01924 498930  
 International Sales T +44 1924 491666 F +44 1924 495605  
 France/Benelux T +32 56 227 266 F +32 56 228 647  
 Germany T +49 7031 60 84 30 F +49 7031 60 84 33  
 Scandinavia T +45 32 55 20 01 F +45 32 52 55 45  
 Hong Kong T +852 2314 8728 F +852 2314 4250



[www.camirafabrics.com](http://www.camirafabrics.com)