



de zeeen magazine

- Magazine
- News
- Movies
- Jobs
- Books
- Watch Store
- MINI Frontiers

- Architecture
- Interiors
- Design
- Technology

Search Go

« Newer story | Older story »

Emilio Nanni's Spy chair features a thin seat to expose its frame

[Share](#) 5
 [Tweet](#) 42
 [Pin it](#)
[submit](#)

16 March 2015 | 2 comments

More: [Design](#) [Furniture](#) [Milan 2015](#)

This week we like: staircases



ASA NEXT
การประกวด / กิจกรรมใหม่

28 April – 3 May 2015
Impact Challenger 1-3
Muang Thong Thani



This simple armchair with a wooden base and upholstered body by Italian designer Emilio Nanni will debut in Milan next month.

Nanni designed Spy to highlight the connection between the chair's soft top and hard bottom.

Dezeen Book of Interviews

Dezeen Daily

daily

Sign up for a daily roundup of all our stories.

you@example.com

You can also sign up to our weekly newsletter.

Subscribe

ARCHITONIC



CALL FOR APPLICATIONS
Sandberg Instituut

Masters of art and design
Deadline: April 1st 2015

Latest photo essays



Abstract photography by Lewis Bush chronicles the "aggressive redevelopment" of London



Ann Ray shares intimate behind-the-scenes



"The Spy armchair was created to reinforce one of the basic concepts involved in designing an upholstered chair: the relationship between the body and the frame," Nanni told Dezeen.

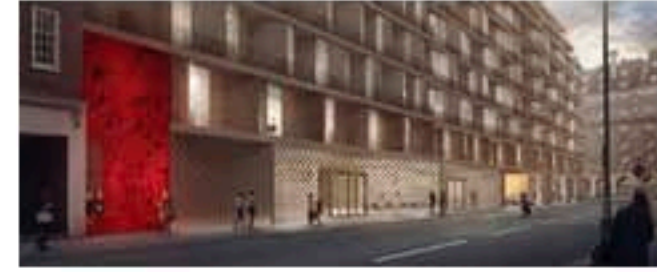
Related story: Ryan Jongwoo Choi's Crumpled Chair is moulded over wrinkled metal

"Unlike what normally happens – when the padded part is made more evident during the design phase – attention is drawn to a new symbiosis between the components," he added.

A thin seat allows the cross-shaped braces beneath to remain visible, while the rear legs extend up behind the curved backrest to draw attention to their purpose as supports.



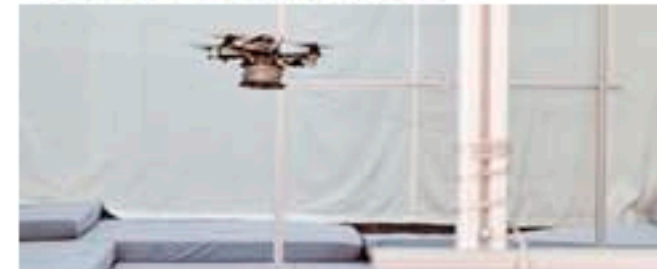
News: David Adjaye reveals project for London's Piccadilly



Opinion: Reinier de Graaf on the Nine Elms bridge



Movie: drones can "weave structures in minutes"



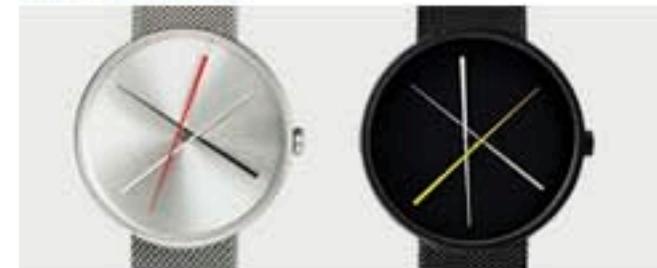
Reader comment: "This doesn't seem ethical"



Competition: win a London Landmarks poster



Latest watch: Crossover by Projects





Midnight Modernism: Tom Blachford shoots Palm Springs houses by moonlight



Yener Torun photographs vibrant modern architecture in Turkey



Josef Schulz documents abandoned checkpoint architecture across Europe

"The points of adhesion and the frame details, in general, have been intentionally revealed, thus producing a new appearance and a new design draft," said Nanni.

Produced by Billiani, the chair's solid beech frame includes four pencil-shaped legs angled slightly away from the main body.

The plywood seat, back and arms are padded with foam and upholstered using textiles from Danish brand Kvadrat.



The frame is available in natural and stained versions, or lacquered to match the colour of the seat.

Nanni's range for Billiani also includes versions of the armchair with a metal frame, a lounge chair, two- and three-seater sofas, and a collection of dining and coffee tables based on the same design as Spy.

Spy will be exhibited at Milan's Salone del Mobile furniture fair from 14 to 19 April, where Arik Levy will also present a seating range supported by split wooden legs.



Dezeen Mail #244



The latest issue of our weekly Dezeen Mail newsletter includes the best stories and comments from readers plus new jobs, competitions, movies and more.

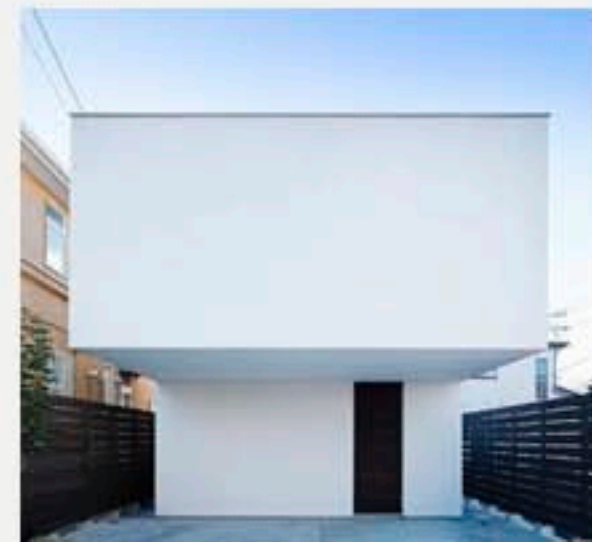
Dezeen Book of Interviews



Our new book features 45 conversations with leading figures in architecture and design from around the world. Buy your copy today for just £12!

Most popular

Most commented



Dezeen Book of Interviews

Buy now for only 010